

Researcher Connect Online

Professional development for researchers

Researcher Connect promotes the development of excellent communication skills for international, multicultural academic contexts. The aim is to enhance the productivity of individual researchers and, in turn, provide their universities and research institutions with a competitive advantage in the fast moving international research environment.



Part of Going Global Partnerships

www.britishcouncil.org

Why researchers' communication skills matter

In an increasingly competitive and globalised market, researchers, and the institutions they represent need to communicate their work effectively to an international audience.

Researchers with strong communication skills are more likely to:

- publish in international journals
- successfully promote their research and represent their institutions at conferences
- gain funding from international bodies
- effectively communicate with the wider public and policy makers
- build international collaborations to further their research.

In recognition of this need, and building on our vision for prosperity through internationalised education, the British Council has developed the Researcher Connect Online professional development course.

What is Researcher Connect?

Researcher Connect Online provides participants with the insights, understanding and tools to communicate more effectively, whatever the situation or context. This course has been delivered across the globe and participant feedback has consistently shown that the workshop enhances researchers' communication skills, knowledge and ability.

Researcher Connect online is offered as a series of modules, delivered through an online workshop format by experienced and quality-assured trainers.

It is designed specifically for early career researchers, although certain aspects would also be of benefit to more experienced members of the research community.

Modules

Each workshop begins with the introductory "Foundation" module that builds awareness essential to all subsequent modules. There are then seven further modules, each designed to address the development needs of the participant researchers. Each module speaks to an important aspect of the modern international research environment, and has flexible content that allows our experienced trainers to adapt the course to the needs and experience of the researcher participants.



Researcher Connect Online

Workshops delivered
in all regions;

4 countries
2020/21

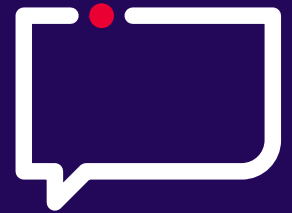
8 countries
2021/22

10 countries
2022/23



*Helped me understand research better
as a student and as a researcher.*

96% engagement



Very comprehensive and diverse

*Collaboration and networking with
different researchers are the strengths of
the workshop.*

*The knowledge can be applied
immediately in my research works.*

472 ECRs
reached
2020/21

89% felt the modula
content was
high to very
high

Part of Going Global Partnerships

www.britishcouncil.org



Researcher Connect Modules programme

Foundation (1 session)

Digital researcher (1 session)

Empowers researchers to strategise and use social media to make their research more accessible, more highly cited and to connect with other researchers and the public, for greater impact.

Academic Collaboration (1 session)

Assists researchers with how to plan collaboration and approach potential collaborators, and builds their understanding of when and where collaboration may be most beneficial and how to handle the challenges of collaboration.

Academic Writing (2 sessions)

Over 2 sessions, participants examine the essentials and types of academic writing, developing their own writing style through the acquisition of tactics, tools and relevant language use techniques.

Effective Proposals (1 session)

Participants explore the principles of writing a competitive proposal, considering the use of audience-focused language and style and the creation of logically connected proposal elements, including rationale, goals, personnel, resources, budgets, outputs/outcomes, and potential impact.

Presenting with Impact (1 session)

Learners build critical awareness, reflective and preparation skills, and practice techniques for the use of voice, body language, visuals, devices and presentation structure through creating and delivering their own oral presentations.

Trainer Clinic (1 session)

A final session building on everything covered during the previous modules. Participants will discuss the research landscape in their country and internationally, explore issues of equality, diversity and inclusion (EDI), share information on resources and opportunities for research and career development, ask the trainers any follow up questions they have on the course content, identify some personal action plans, and provide feedback on the workshop.

